

Panasonic[®]

System Setup Guide

Home Network System
HUB

Model No. **KX-HNB600HM**



Thank you for purchasing a Panasonic product.

This document explains how to configure the hub and access it using a mobile device. These steps must be followed before you can use the system.
For details about how to use the system, refer to the User's Guide (page 16).

Please read this document before using the unit and save it for future reference.

Table of Contents

Introduction

Accessory information	3
Expanding the Panasonic Home Network System	4

Important Information

About this system	6
For your safety	6
Important safety instructions	7
Security cautions	7
For best performance	8
Other information	8

Setup

Part names and functions	10
LED indicator	10
Connections	11
Wi-Fi® settings	12
Registering another mobile device	14
Registering other devices to the hub	15

Appendix

Wireless communication range (DECT)	16
Accessing the User's Guide	16
Wall mounting	17
Specifications	19
Open source software notice	19
Software information	19

Accessory information

Supplied accessories

No.	Accessory item/Part number	Quantity
①	AC adaptor/PNLV236E	1
②	Telephone line cord	1
③	Telephone line cord (Hong Kong only)	1
④	Wall mounting adaptor	1



Additional accessories

microSD card (not supplied)

A commercially-available microSD card must be inserted into the hub in order to record images from cameras. The following types of microSD cards are supported.

- microSD / SDHC card: Up to 32 GB

Other information

- Design and specifications are subject to change without notice.
- The illustrations in these instructions may vary slightly from the actual product.

Trademarks

- microSDHC Logo is a trademark of SD-3C, LLC.
- iPhone and iPad are trademarks of Apple Inc., registered in the U.S. and other countries.
- iPad mini is a trademark of Apple Inc., registered in the U.S. and other countries.
- Android and Google Play are registered trademarks or trademarks of Google Inc.
- Microsoft, Windows, and Internet Explorer are either registered trademarks or trademarks of Microsoft Corporation in the United States and/or other countries.
- Wi-Fi, WPA, and WPA2 are registered trademarks or trademarks of Wi-Fi Alliance.
- All other trademarks identified herein are the property of their respective owners.

Notice

- The hub supports microSD and microSDHC memory cards. In this document, the term "microSD card" is used as a generic term for any of the supported cards.

Introduction

Expanding the Panasonic Home Network System

The Panasonic Home Network System is a wireless system that lets you create a powerful network of devices, such as cameras, sensors, and smart plugs, and control them all with an easy-to-use app.

Compatible devices are explained below. For information about the Home Network app, refer to the User's Guide (page 16).

The maximum number of devices for each device type is listed below.

Digital Cordless Handset (KX-HNH100: 6 max.*¹) <ul style="list-style-type: none">● Makes and receives calls using your home landline● Can be used to change the system's arm mode● Displays system status● Receives notification when the sensors are triggered	A black and white illustration of a digital cordless handset standing on its base. The handset has a small screen at the top and a numeric keypad below it.
Indoor Camera (KX-HNC200: 4 max.*²) <ul style="list-style-type: none">● Full-colour camera and built-in microphone for live monitoring and recording● Built-in visual sensor, audio sensor, and temperature sensor can be used to trigger other actions (camera recording, turning on a light, etc.)● Built-in microphone and speaker for two-way communication	A black and white illustration of an indoor camera. It has a rounded, boxy shape with a lens in the center and a small microphone/speaker grille on the side.
Outdoor Camera (KX-HNC600: 4 max.*²) <ul style="list-style-type: none">● Full-colour camera with built-in microphone for live monitoring and recording● Built-in visual sensor and infrared sensor can be used to trigger other actions (camera recording, turning on a light, etc.)● Built-in microphone and speaker for two-way communication● Splash proof design for permanent, outdoor installation	A black and white illustration of an outdoor camera. It has a more rugged, rectangular design with a lens and a microphone/speaker grille, and it includes a mounting bracket for wall installation.
Window/Door Sensor (KX-HNS101: 50 max.*²) <ul style="list-style-type: none">● Detects when the corresponding window or door is opened● Can be used to trigger other events (camera recording, turning on a light, etc.)	A black and white illustration of a window/door sensor. It is a small, rectangular device with a slightly protruding sensor part.
Motion Sensor (KX-HNS102: 50 max.*²) <ul style="list-style-type: none">● Detects motion in the surrounding area● Can be used to trigger other events (camera recording, turning on a light, etc.)	A black and white illustration of a motion sensor. It is a small, rounded square device with a lens in the center.

Introduction

Smart Plug (KX-HNA101: 50 max.*2)

- Can be turned on and off using the handset or Home Network app, when triggered by a sensor, or according to a schedule
- Built-in overcurrent and overwattage detection for added peace of mind
- Power consumption is logged for your reference



- *1 Optional handsets may be a different colour from that of the handset supplied as part of a pre-configured bundle.
- *2 A total of 6 cordless handsets, 4 cameras, and 50 other devices (motion sensors, window/door sensors, smart plugs, etc.) can be registered to the hub.

The Home Network System product lineup is growing!

You can look forward to new devices that will make your Home Network System even more useful and convenient.

For information about the latest devices and bundles, visit the website below.

For Hong Kong region: www.panasonic.oa.hk

For Singapore: www.panasonic.com.sg

For Malaysia: www.panasonic.com.my

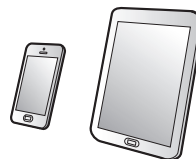
Mobile devices

Your mobile devices: 8 max.*1

You can expand the system by installing the Home Network app on your mobile devices (smartphones, tablets, etc.) and registering your mobile devices to the hub. See page 12 for more information about the Home Network app.

Note:

- You must configure the hub's Wi-Fi settings before you can use the app.



- *1 8 mobile devices can be registered to the hub, however, only the first 4 can use phone features.

Important Information

About this system

- This system is an auxiliary system; it is not designed to provide complete protection from property loss. Panasonic will not be held responsible in the event that property loss occurs while this system is in operation.
- The system's wireless features are subject to interference, therefore functionality in all situations cannot be guaranteed. Panasonic will not be held responsible for injury or damage to property that occurs in the event of wireless communication error or failure.

For your safety

To prevent severe injury and loss of life/property, read this section carefully before using the product to ensure proper and safe operation of your product.



WARNING

Power connection

- Use only the power source marked on the product.
- Do not overload power outlets and extension cords. This can result in the risk of fire or electric shock.
- Completely insert the AC adaptor/power plug into the power outlet. Failure to do so may cause electric shock and/or excessive heat resulting in a fire.
- Regularly remove any dust, etc. from the AC adaptor/power plug by pulling it from the power outlet, then wiping with a dry cloth. Accumulated dust may cause an insulation defect from moisture, etc. resulting in a fire.
- Unplug the product from power outlets if it emits smoke, an abnormal smell, or makes an unusual noise. These conditions can cause fire or electric shock. Confirm that smoke has stopped emitting and contact an authorised service centre.
- Unplug from power outlets and never touch the inside of the product if its casing has

been broken open. Danger of electric shock exists.

- Never touch the plug with wet hands. Danger of electric shock exists.
- Do not connect non-specified devices.

Installation

- To prevent the risk of fire or electrical shock, do not expose the product to rain or any type of moisture.
- Do not place or use this product near automatically controlled devices such as automatic doors and fire alarms. Radio waves emitted from this product may cause such devices to malfunction resulting in an accident.
- Do not allow the AC adaptor or telephone line cord to be excessively pulled, bent or placed under heavy objects.
- Keep small parts, such as microSD cards, out of the reach of children. There is a risk of swallowing. In the event they are swallowed, seek medical advice immediately.

Operating safeguards

- Unplug the product from power outlets before cleaning. Do not use liquid or aerosol cleaners.
- Do not disassemble the product.
- Do not spill liquids (detergents, cleansers, etc.) onto the telephone line cord plug, or allow it to become wet at all. This may cause a fire. If the telephone line cord plug becomes wet, immediately pull it from the telephone wall jack, and do not use.
- Never put metal objects inside the product. If metal objects enter the product, turn off the circuit breaker and contact an authorised service centre.

Medical

- Consult the manufacturer of any personal medical devices, such as pacemakers or hearing aids, to determine if they are adequately shielded from external RF (radio frequency) energy. DECT features operate between 1.88 GHz and 1.90 GHz with a peak transmission power of 250 mW. Wi-Fi features operate between 2.412 GHz

Important Information

and 2.472 GHz with a peak transmission power of 100 mW.

- Do not use the product in health care facilities if any regulations posted in the area instruct you not to do so. Hospitals or health care facilities may be using equipment that could be sensitive to external RF energy.

CAUTION

Installation and location

- Never install wiring during a lightning storm.
- Never install telephone line jacks in wet locations unless the jack is specifically designed for wet locations.
- Never touch uninsulated telephone wires or terminals unless the telephone line has been disconnected at the network interface.
- Use caution when installing or modifying telephone lines.
- The AC adaptor is used as the main disconnect device. Ensure that the AC outlet is installed near the product and is easily accessible.
- This product is unable to make calls when:
 - there is a power failure.
 - when the cordless handset or mobile device's batteries need recharging or have failed.

Important safety instructions

When using your product, basic safety precautions should always be followed to reduce the risk of fire, electric shock, and injury to persons, including the following:

1. Do not use this product near water for example, near a bathtub, washbowl, kitchen sink, or laundry tub, in a wet basement or near a swimming pool.
2. Avoid using a telephone (other than a cordless type) during an electrical storm. There may be a remote risk of electric shock from lightning.
3. Do not use the telephone to report a gas leak in the vicinity of the leak.

4. Use only the power cord indicated in this document.

SAVE THESE INSTRUCTIONS

Security cautions

Take appropriate measures to avoid the following security breaches when using this product.

- Leaks of private information
- Unauthorised use of this product
- Unauthorised interference or suspension of the use of this product

Take the following measures to avoid security breaches:

- Configure the wireless router that connects your mobile device to this product to use encryption for all wireless communication.
- You may be vulnerable to security breaches if the unit is used with the login password, disarm code, or PIN code, or other settings at their defaults values. Configure your own values for these settings.
- Do not use passwords that could be easily guessed by a third party. If you keep a record of your passwords, protect that record. Change passwords regularly.
- If you lose your mobile device, change the password used to access this product.
- If you enable the product's auto login feature, enable the screen lock or similar security feature on your mobile device.
- Take care when performing important security related operations such as deleting MAC address, unit IDs, etc.
- To prevent disclosure of personal information, enable the screen lock or similar security feature on your mobile device.
- When submitting the product for repair, make a note of any important information stored in the product, as this information may be erased or changed as part of the repair process.
- Before handing the product over to a third party for repair or other purposes, perform a factory data reset to erase any data

Important Information

- stored in the product and remove the microSD card. Use only trusted repair services authorised by Panasonic.
- Before disposing of the product, perform a factory data reset to erase any data stored in the product. Remove and erase the microSD card.
 - If your mobile device will no longer be used with the product, delete your mobile device's registration from the product and delete the corresponding app from your mobile device.
 - If this product experiences a power outage, its date and time setting may become incorrect. In this case, the date and time setting will be automatically corrected when your mobile device and this product are connected to the same wireless network.

Additionally, note the following.

- Multiple hubs cannot be used on the same network.
- Only one mobile device can access this product while away from home. If a second mobile device connects to this product while away from home, the first mobile device is disconnected.
- Communications may be interrupted depending on network conditions and wireless signal quality.
- This product may be used in ways that violate the privacy or publicity rights of others. You are responsible for the ways in which this product is used.

For best performance

Hub location/avoiding noise

The hub and other compatible Panasonic devices use radio waves to communicate with each other.

- For maximum coverage and noise-free communications, place your hub:
 - at a convenient, high, and central location with no obstructions between the devices and hub in an indoor environment.

- away from electronic appliances such as TVs, radios, personal computers, wireless devices, or other phones.
 - facing away from radio frequency transmitters, such as external antennas of mobile phone cell stations. (Avoid putting the hub on a bay window or near a window.)
- Coverage and voice quality depends on the local environmental conditions.
 - If the reception for a hub location is not satisfactory, move the hub to another location for better reception.

Environment

- Keep the product away from electrical noise generating devices, such as fluorescent lamps and motors.
- The product should be kept free from excessive smoke, dust, high temperature, and vibration.
- The product should not be exposed to direct sunlight.
- Do not place heavy objects on top of the product.
- When you leave the product unused for a long period of time, unplug the product from the power outlet.
- The product should be kept away from heat sources such as radiators, cookers, etc. It should not be placed in rooms where the temperature is less than 0 °C or greater than 40 °C. Damp basements should also be avoided.
- The maximum communication range may be shortened when the product is used in the following places: Near obstacles such as hills, tunnels, underground, near metal objects such as wire fences, etc.
- Operating the product near electrical appliances may cause interference. Move away from the electrical appliances.

Other information

Routine care

- Wipe the outer surface of the product with a soft moist cloth.

Important Information

- Do not use benzine, thinner, or any abrasive powder.

Protecting your recordings

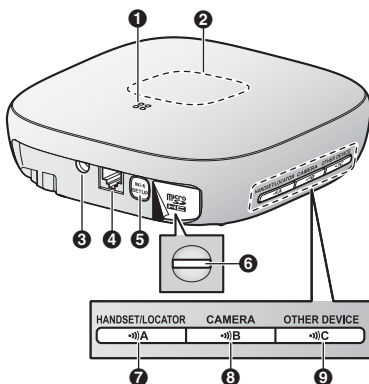
- Do not remove the microSD card or disconnect the hub's AC adaptor while reading or writing data to the microSD card. Data on the card could become corrupted.
- If a microSD card malfunctions or is exposed to electromagnetic waves or static electricity, data on the card could become corrupted or erased. Therefore we recommend backing up important data to a computer or other device.

Notice for product disposal, transfer, or return

- This product can store your private/confidential information. To protect your privacy/confidentiality, we recommend that you erase information such as phonebook or caller list entries from the memory before you dispose of, transfer, or return the product.

Setup

Part names and functions



- 1 Speaker**
- 2 LED indicator**
- 3 DC jack**
- 4 LINE jack**
- 5 [Wi-Fi SETUP]**
Used when performing initial setup.
- 6 microSD card slot**
Used when inserting a microSD card.
Remove the label when inserting.
- 7 [A] HANDSET/LOCATOR**
Used when registering a handset. You can also press this button to locate a misplaced handset.
- 8 [B] CAMERA**
Used when registering a camera.
- 9 [C] OTHER DEVICE**
Used when registering a sensor or smart plug.

LED indicator

You can use the LED indicator to confirm the hub's status.

Indicator	Status
Off	No power, or LED indicator is turned off*1
Green, lit	Normal operation, connected to wireless router*1
Green, blinking slowly	Registration mode
Green, blinking quickly	Hub is searching for wireless router
Alternating: Green, blinking slowly Yellow, blinking slowly	Hub is starting up (cannot be used yet)*2
Red, lit	Alarm system is armed*1
Red, blinking quickly	Alarm system was triggered
Yellow, lit	Initial setup required
Yellow, blinking slowly	Initial setup in progress, mobile device connected
Yellow, blinking	Initial setup is starting

*1 You can configure the hub so that its LED indicator does not light during normal operation. For more information, refer to the User's Guide (page 16).

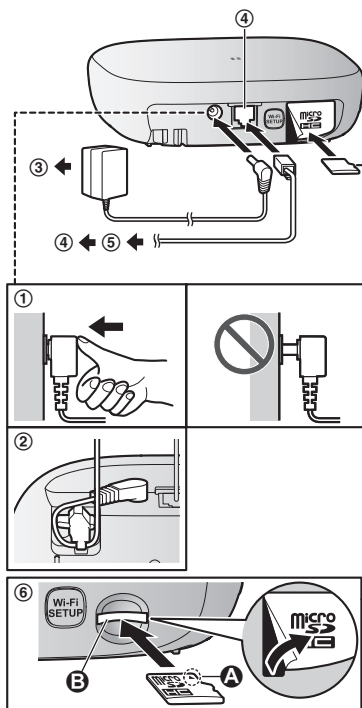
*2 It may take some time for the hub to finish starting up.

Connections

- ① Insert the AC adaptor plug firmly into the DC jack.
- ② Secure the AC adaptor cord by wrapping it around the hook.
- ③ Connect the AC adaptor to the power outlet.
- ④ Insert the telephone line cord into the LINE jack and a telephone line jack until you hear a click.
- ⑤ **DSL/ADSL service users only:** Connect your DSL/ADSL filter (not supplied).
- ⑥ **Outdoor Camera (KX-HNC600) or Indoor Camera (KX-HNC200) users only:** Remove the label covering the card slot and then insert the microSD card (not supplied) into the slot with the notched corner (A) facing upwards (B) until it clicks into place.

Note:

- Use only the supplied Panasonic AC adaptor PNLV236E.
- A microSD card (not supplied) is required to record images from cameras. Refer to the information about the available microSD card (page 3).
- To remove the microSD card, push in the microSD card and then remove it.



Note about power connections

AC adaptor connection

- The AC adaptor must remain connected at all times. (It is normal for the adaptor to feel warm during use.)
- The AC adaptor should be connected to a vertically oriented or floor-mounted AC outlet. Do not connect the AC adaptor to a ceiling-mounted AC outlet, as the weight of the adaptor may cause it to become disconnected.

Setup

If the unit is connected to a PBX system, please contact your PBX supplier.

Power failure

- The hub will not work during a power failure.
- The hub's telephone features will not work during a power failure. We recommend connecting a corded-type telephone that does not use an AC adaptor to your telephone line.

Wi-Fi® settings

After you have connected your hub, here is what you will need to do in order to access the system from your mobile device. Each procedure is explained in this chapter.

- 1 Download**
Download the **[Home Network]** app to your mobile device.
- 2 Initial setup**
Use the **[Home Network]** app to configure the hub to connect to your wireless router, and then register your mobile device to the hub.

Downloading the [Home Network] app

Download information is available at the web page listed below.



www.panasonic.net/pcc/support/tel/homenetwork/

Compatible mobile devices

iPhone 4 or later, iPad, or iPad mini (iOS 6.0 or later) or an Android™ device (Android 4.0 or later)

Note:

- The **[Home Network]** app may not function properly depending on the system environment, such as the model of your mobile device, peripherals connected to your mobile device, and the apps installed on your mobile device.
- The following Android devices are not compatible with the **[Home Network]** app.
 - Android devices that are not supported by Google Play
 - Android devices with limited hardware features

Initial setup

Confirm the following before you begin.

- Make sure you have installed the **[Home Network]** app on your mobile device
- Make sure the hub and your wireless router are turned on and the hub's LED indicator is lit in yellow
- Make sure the hub is located within range of your wireless router
- Make sure your mobile device is connected to your wireless router
- Make sure your mobile device can connect to the Internet
- Make sure you know the network name (SSID) and password assigned to your wireless router

Initial setup for iPhone, iPad

- 1** Start the **[Home Network]** app.
- 2** Tap **[Set up the Hub]**.
- 3** When prompted, press **[Wi-Fi SETUP]** on the hub.
 - The LED indicator blinks in yellow.
- 4** Change your mobile device's Wi-Fi setting temporarily so that it connects to the hub directly.
 - Open your mobile device's **[Settings]** app, tap **[Wi-Fi]**, select "KX-HNB600_Panasonic", enter

"00000000" as the password, and then tap **[Join]**.

- If more than 1 item named "KX-HNB600_Panasonic" is displayed, wait approx. 10 minutes and perform this procedure from the beginning.
- 5 Start the **[Home Network]** app again.
 - 6 If necessary, enter the password required to connect to your wireless router and then tap **[Next]**.
 - The hub and your mobile device connect to your wireless router.
 - If prompted, follow the on-screen instructions and connect your mobile device to your wireless router, start the app again, and then tap **[Add This Mobile Device]**.
 - If you enter the wrong Wi-Fi password, **[Setup failed.]** is displayed and the hub's LED indicator blinks quickly in green. In this case, perform the following.
 1. Press and hold the 3 registration buttons on the side of the hub and the **[Wi-Fi SETUP]** button on the back of the hub at the same time (4 buttons total) until the hub's LED indicator blinks slowly in green and yellow.
 2. Wait for the hub's LED indicator to light in yellow.
 3. Repeat the initial setup procedure.
 - 7 When prompted, press **[Wi-Fi SETUP]** on the hub.
 - Your mobile device will be registered to the hub.
 - 8 When prompted, follow the on-screen instructions and set the password used to log in to the hub while away from home.
 - 9 When prompted, enter a name for your mobile device and then tap **[OK]**.
 - This setting allows you to change the name assigned to your device. It can help you identify your mobile device when performing certain operations, such as deregistering or making intercom calls using a cordless handset.
 - The app's home screen is displayed when initial setup is complete.

Initial setup for Android devices

- 1 Start the **[Home Network]** app.
- 2 Tap **[Set up the Hub]**.
- 3 When prompted, press **[Wi-Fi SETUP]** on the hub.
 - The LED indicator blinks in yellow.
 - The app temporarily changes your mobile device's Wi-Fi setting so that it connects to the hub directly.
- 4 If necessary, enter the password required to connect to your wireless router and then tap **[Next]**.
 - The hub and your mobile device connect to your wireless router.
- 5 When prompted, press **[Wi-Fi SETUP]** on the hub.
 - Your mobile device will be registered to the hub.
- 6 When prompted, follow the on-screen instructions and set the password used to log in to the hub while away from home.
- 7 When prompted, enter a name for your mobile device and then tap **[OK]**.
 - This setting allows you to change the name assigned to your device. It can help you identify your mobile device when performing certain operations, such as deregistering or making intercom calls using a cordless handset.
 - The app's home screen is displayed when initial setup is complete.

Information about Wi-Fi communication

The hub uses Wi-Fi to communicate with your wireless router. Refer to the following information when planning where to place the hub.

Do not use the hub in the following areas or locations. Malfunction or interference to radio communication may result.

- Indoor areas that have certain types of radio or mobile communications equipment
- Locations near microwave ovens or Bluetooth devices

Setup

- Indoor areas where antitheft devices or 2.4 GHz frequency devices such as POS systems are used

Do not place the hub in areas where the following materials or objects are located between the hub and the wireless router. These materials and objects may interfere with wireless communication or cause wireless transmission speed to become slower.

- Metallic doors or shutters
- Walls containing aluminium-sheet insulation
- Walls made of concrete, stone, brick, or tin
- Multiple walls
- Steel shelving
- Fireproof glass

Registering another mobile device

In order to access the system from a mobile device, you must first register the mobile device to the hub. You can register up to 8 mobile devices to a hub.

Confirm the following before you begin.

- Make sure you have completed the initial setup procedure
- Make sure your mobile device can connect to the Internet
- Make sure your wireless router and the hub are turned on
- Make sure your mobile device and the hub are connected to the same wireless router

- 1** Using the mobile device that you want to register, download the **[Home Network]** app and then start the app.
- 2** Tap **[Add This Mobile Device]**.
- 3** When prompted, press **[Wi-Fi SETUP]** on the hub.
 - Your mobile device will be registered to the hub.
- 4** When prompted, follow the on-screen instructions and enter the password used to log in to the hub while away from home.
- 5** When prompted, enter a name for your mobile device and then tap **[OK]**.
 - This setting allows you to change the name assigned to your device. It can help you identify your mobile device when performing certain operations, such as deregistering or making intercom calls using a cordless handset.
 - The app's home screen is displayed when initial setup is complete.

Registering other devices to the hub

This procedure is not required for devices that were included as part of a bundle.

Before you can use devices such as cameras, sensors, and smart plugs, they must be registered to the hub.

If you purchased devices separately (i.e., not as part of a bundle), you must register each device to the hub.

You can register each device by using the registration buttons or the **[Home Network]** app.

Using registration buttons

- 1 Hub:**
Press and hold the registration button until the LED indicator blinks slowly in green.
 - Press and hold the appropriate registration button (page 10) according to the device you want to register.
 - [A] HANDSET/LOCATOR:** For handsets
 - [B] CAMERA:** For cameras
 - [C] OTHER DEVICE:** For other devices
- 2 Handset:**
Place the handset on the charger.
Devices other than handset:
Press and hold the device's registration button until the device's LED indicator blinks slowly in green.
 - When registration is complete, the hub sounds one long beep.

Note:

- If registration fails, the hub sounds several short beeps.
- To register a mobile device, use the procedure described on page 14.

Using the app

- 1** Start the **[Home Network]** app.
- 2** From the **[Home Network]** app home screen, tap **[Settings]**.
- 3** Tap **[Device Registration]**.
- 4** Tap **[Registration]**.
- 5** Select the type of device that you want to register.
- 6 Handset:**
Place the handset on the charger.
Devices other than handset:
Press and hold the registration button on the device you want to register until the device's LED indicator blinks slowly in green.
 - When registration is complete, the hub sounds one long beep.

Note:

- If registration fails, the hub sounds several short beeps.

Appendix

Wireless communication range (DECT)

The wireless communication range of each device in the system from the hub is approximately 50 m indoors and approximately 300 m outdoors. Wireless communication may be unreliable when the following obstacles are located between the hub and other system devices.

- Metal doors or screens
- Walls containing aluminium-sheet insulation
- Walls made of concrete or corrugated iron
- Double-pane glass windows
- Multiple walls
- When using each device on separate floors or in different buildings


Accessing the User's Guide

The User's Guide is a collection of online documentation that helps you get the most out of the **[Home Network]** app.

1 iPhone/iPad

Tap  in the app's home screen.

Android devices

Tap  or press your mobile device's menu button in the app's home screen.

2 Tap [User's Guide].

Note:

- Microsoft® Windows® Internet Explorer® 8 and earlier versions are not supported.
- Android 4.1 or later versions are recommended.
- You can also access the User's Guide at the web page listed below.



www.panasonic.net/pcc/support/tel/homenetwork/manual/

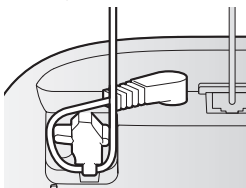
Wall mounting

You can use the included wall mounting adaptor to wall mount the hub if desired.

Note:

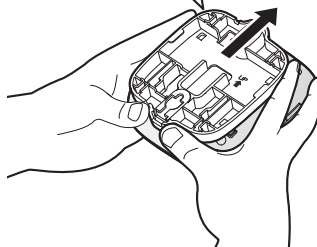
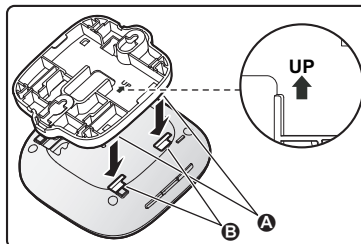
- Make sure that the wall and the fixing method are strong enough to support the weight of the unit.
- Drive the screws (not supplied) into the wall.

- 1 Connect the AC adaptor and the telephone line cord to the hub.
 - Secure the AC adaptor cord by wrapping it around the hook.



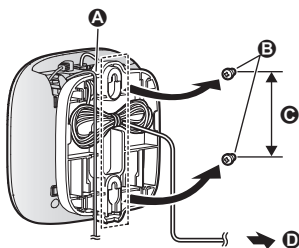
- 2 Slide the wall mounting adaptor up until it clicks into place.

- Make sure the "UP" mark on the wall mounting adaptor faces upwards.
- Align and insert the tabs (A) of the wall mounting adaptor to the grooves (B) of the hub.



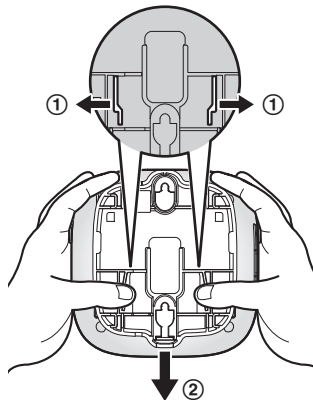
Appendix

- 3** Mount the hub on a wall then slide down to secure in place.
- Pass the AC adaptor cord and the telephone line cord through the groove **(A)** in the wall mounting adaptor. Wrap up the telephone line cord as shown to prevent the cord from being pinched.
- (B)** Screws
(C) 83 mm
(D) To telephone line jack



Removing the wall mounting adaptor

While pushing the release levers **(1)** away from the centre of the wall mounting adaptor, slide the adaptor down **(2)**.



Specifications

- **Standards**
DECT:
 DECT (Digital Enhanced Cordless Telecommunications)
 GAP (Generic Access Profile)
Wi-Fi:
 IEEE 802.11b/g/n
- **Number of channels:**
 120 Duplex Channels
- **Frequency range**
DECT:
 1.88 GHz – 1.90 GHz
Wi-Fi:
 2.412 GHz – 2.472 GHz (channels 1 – 13)
- **RF transmission power**
DECT:
 Approx. 83 mW (average power per channel: when 4 cameras, a handset, and another device are registered)
Wi-Fi:
 100 mW (peak transmission power)
- **Encryption**
 WPA2™-PSK (TKIP/AES), WPA™-PSK (TKIP/AES), WEP (128/64 bit)
- **Simplified configuration**
 WPS (PBC)
- **Power source**
 220 – 240 V AC, 50/60 Hz
- **Power consumption**
 Standby: Approx. 4.0 W
 Maximum: Approx. 4.5 W
- **Operating conditions**
 0 °C – 40 °C
 20 % – 80 % relative air humidity (dry)
- **Alert tone volume**
 High alert level: approx. 90 dB
 Low alert level: approx. 73 dB
 (measured approx. 10 cm in front of the centre of the unit)
- **Dimensions (height × width × depth)**
 Approx. 42 mm × 130 mm × 130 mm
- **Mass (weight)**
 Approx. 220 g

Open source software notice

- Parts of this product use open source software supplied based on the relevant conditions of the Free Software Foundation's GPL and/or LGPL and other conditions. Please read all licence information and copyright notices related to the open source software used by this product. This information is available at the following web page:
www.panasonic.net/pcc/support/tel/homenetwork/
 At least three (3) years from delivery of this product, Panasonic System Networks Co., Ltd. will give to any third party who contacts us at the contact information provided below, for a charge of no more than the cost of physically distributing source code, a complete machine-readable copy of the corresponding source code and the copyright notices covered under the GPL and the LGPL. Please note that software licenced under the GPL and the LGPL is not under warranty.
www.panasonic.net/pcc/support/tel/homenetwork/

Software information

- The End User Licence Agreement (EULA) for the Home Network app is available at the following web page:
www.panasonic.net/pcc/support/tel/homenetwork/

For your future reference

We recommend keeping your warranty card and a record of the following information to assist with any repair under warranty.

Serial No.	Date of purchase
(found on the bottom of the unit)	
Name and address of dealer	

Attach your purchase receipt here.

Panasonic System Networks Co., Ltd.

1-62, 4-chome, Minoshima, Hakata-ku, Fukuoka 812-8531, Japan

© Panasonic System Networks Co., Ltd. 2015