

Direct Printing from USB memory

A convenient built-in USB slot lets you plug in a USB memory stick and print data directly from the USB memory without using a PC.



Built-in Wi-Fi®

Built-in Wi-Fi® enables a wireless connection to a network PC via your local network, without requiring a physical LAN connection. The WPS key permits you to easily configure a wireless network.

Specifications

| Model | DP-MB251 |
|---|--|
| Recording Paper Size | Cassette: A4, A5, LTR, LGL, Folio/Foolscap (216 x 330 mm), Oficio (216 x 340 mm), B5(JIS/ISO), 16K, Custom (W: 210-216 mm, L: 279-356 mm) Multi-purpose tray/Manual tray: A4, A5, A6, LTR, LGL, B6(JIS/ISO), B5(JIS/ISO), 216 x 330 mm, 216 x 340 mm, 16K, Envelope #10/DL/YOUKEI #4/CHOUKEI #3/CHOUKEI #4, Japanese Postcard, Custom (W: 90-216 mm, L: 200-356 mm) |
| Recording Paper Capacity *1 | Maximum 1050 sheets (Standard tray: 500 sheets / Multi-Purpose tray: 50 sheets / Optional tray: 500 sheets) |
| Automatic Document Feeder (Sheets) | 50 (RADF) |
| LCD Display | 16 digits / 2 lines (Backlit LCD) |
| Toner Empty Indicator | Yes |
| Memory Size | 768 MB |
| Software (Multi-Function / OCR) | Yes / Yes |
| Phonebook (Phonebook + One-touch dial)(Items) | 300 + 6, Supported LDAP |
| Power Consumption | Maximum: Approx. 1000 W, Copy: Approx. 500 W, Ready: Approx. 55 W, Sleep: Less than 2.2 W*2 |
| USB | 2.0 Hi-Speed |
| Network Interface | 10Base-T / 100Base-TX / 1000Base-T, IEEE802.11b/g/n |
| Print Speed (A4) | 30 ppm |
| Print Resolution (dpi) | Up to 1200 x 1200 (True) |
| First Print Time (sec.) | 8.5 |
| Print Language | GDI, PCL6, Adobe® PostScript® 3™ |
| Duplex Print | Yes (28 ppm) |
| Supported OS (Windows) (Others) | Windows® XP / Windows Vista® / Windows® 7 / Windows® 8 / Windows® 8.1, Windows Server® 2008 / Windows Server® 2012 Mac OS X 10.5-10.10, Linux*3 |
| Copy Speed (A4) | 30 cpm |
| First Copy Time (sec.) | Approx 8.0 |
| Copy Resolution (dpi) | Up to 1200 x 1200 |
| Multi-Copy (Pages) | 99 |
| Duplex Copy | Yes (28 cpm*4) |
| Copy Functions | Quick ID, N-in-1, Separate N-in-1, Poster, Image Repeat, Booklet, Edge/Margin |
| Colour Scanning Resolution (dpi) | Up to 1200 x 1200 (Optical) / Up to 19200 x 19200 (Interpolated) |
| Duplex Scan | Yes |
| Scan Functions | Scan to PC / OCR / Email Address*6 / FTP / SMB / USB |
| Supported OS (Windows) (Others) | Windows® XP / Windows Vista® / Windows® 7 / Windows® 8 / Windows® 8.1 Mac OS X 10.5-10.10, Linux*3 |
| Modem Speed (kbps) | 33.6 - 2.4 |
| Memory Transmission (Pages*6) | 200 |
| Out-of-Paper Reception (Pages*6) | 400 |
| Duplex Fax (Transmission / Reception) | Yes / Yes |
| Sequential Broadcast (Locations) | 20 x 3 |
| Internet Fax | Yes |
| Error Correction Mode (ECM) | Yes |
| Incoming Fax Preview | Yes (Web) |
| PC Fax Modem | Yes |
| Fax to Email | Yes |
| Caller ID Compatibility*7 | Yes |
| Caller ID List Printout | Yes |
| One-Touch Dialing (Items / Station keys) | 6*8 / 3 x 2 |
| One-Touch Tone Switching | Yes |
| External Telephone Jack | Yes |
| Dimensions (W x D x H mm) | 400 x 413 x 400 (Including handset unit: 495 x 413 x 400) |
| Weight (kg) | 16 |
| Option | Optional Lower Input Tray KX-FAP107 (500 sheets) |
| Consumables | Toner Cartridge DQ-TCC008E (8,000 pages, ISO/IEC 19752 standard) Drum Cartridge DQ-DCC018E (18,000 pages) |

*1 75 g/m² *2 When only USB interface is connected and LAN is OFF. Power consumption in sleep mode depends on machine condition. *3 Supported Linux distribution: Red Hat® Enterprise Linux® Desktop 5/6/7, Ubuntu® 10/11/12/13/14. Driver is provided via web download. *4 When using single-sided originals. *5 This function may not be available depending on an Email server setting. *6 Based on the ITU-T No. 1 Test Chart in standard resolution. *7 Requires subscription to fee-based telephone company service. *8 For stations 4-6, combined operation with the "LOWER" key is required.

- Adobe, PostScript and PostScript 3 are either registered trademarks or trademarks of Adobe Systems Incorporated in the United States and/or other countries.
- Wi-Fi and the Wi-Fi CERTIFIED logo are registered trademarks or trademarks of Wi-Fi Alliance.
- Google Cloud Print is a trademark of Google Inc.
- Windows, Windows Vista and Windows Server are registered trademarks of Microsoft Corporation in the United States and/or other countries.
- Mac and OS X are trademarks of Apple Inc., registered in the U.S. and other countries.
- Linux is the registered trademark or trademark of Linus Torvalds in the U.S. and other countries.
- Red Hat and Red Hat Enterprise Linux are registered trademarks or trademarks of Red Hat, Inc. in the United States and/or other countries.
- Ubuntu is a registered trademark or a trademark of Canonical Ltd. in the U.S. and other countries.

Design and specifications are subject to change without notice.

High-speed duplex printing and copying with multi-size paper handling capability

High-speed
28 ppm
Duplex
30 ppm for Simplex



High-Durability Compact Business Machine

30 ppm High-speed printing
28 ppm duplex printing/
copying



Heavy Duty Design

100,000 pages monthly print volume

Built to handle the rigorous demands of businesses requiring high volume continuous printing capability, the DP-MB251CX features extra tough body construction. Together with the high yield 8,000-sheet toner cartridge, the DP-MB251CX delivers high speed 30 ppm simplex printing with a maximum duty cycle of 100,000 pages, ideal for large businesses where extra high volume printing is required every day.

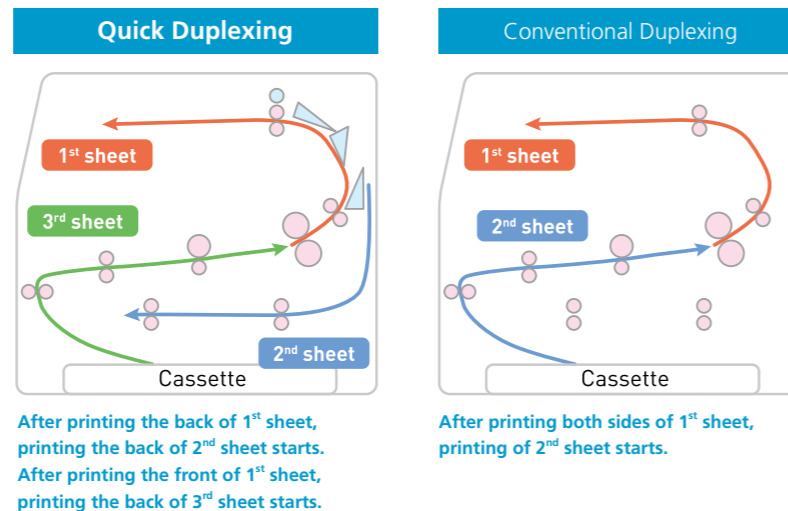
Monthly print volume Max
100,000 pages

High Productivity

28-ppm Quick Duplexing

Printing on one side of the page can be wasteful and inefficient. That's why these models feature a duplex printing capability. Conventional A4 size multi-function printers invert the pages one at a time, resulting in slow performance and poor productivity. Panasonic multi-function printers come as standard with quick duplexing, making it possible to print both sides at virtually the same speed* as single-side printing.

* Duplex productivity: 93 % (28 ppm)



500-sheet paper tray

Usually compact MFPs designed to be used in small offices or home offices (SOHO) are equipped with a 250-sheet paper cassette, while commercial printing paper is normally supplied in 500-sheet packs. Despite the compact design and slim profile, with a height of just 400 mm, the DP-MB251CX is equipped with large-capacity cassettes capable of holding a full pack of 500 sheets. This means that you can load all 500 sheets at one time and not have to leave open reams of paper lying around your office.



50-sheet reversing automatic document feeder

The DP-MB251CX is also equipped with an automatic reversing feed function that can automatically scan both sides of the document. This is done using a Reversing Automatic Document Feeder (RADF). Besides improving efficiency, this is especially convenient as double-side printing is becoming more common.

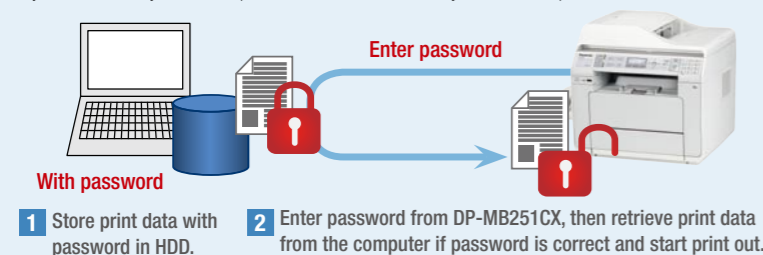


Advanced Features

Secure printing

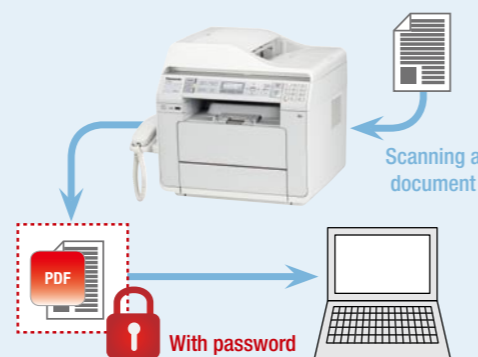
With Secure Print, you can prevent confidential documents from being leaked by protecting them with very high level security. Print data is password-protected and temporarily stored on your computer's hard drive. It can be retrieved and printed only when the password is entered on the printer. Plus, there is no limit to the number of pages you can store since, unlike most secure print systems that use memory-based storage, the secure print data is stored on your PC's hard drive.*

* Up to 30 jobs can be printed at a time from print data on the hard drive. If there are more than 30 jobs, additional jobs can be printed out after the first 30 jobs have completed.



Secure scanning

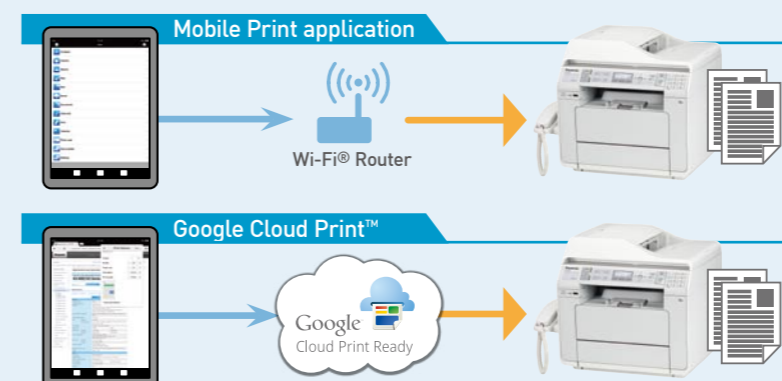
In order to make secure document scanning, DP-MB251CX supports scanning with password-protected PDF file. It improves information leak prevention, and secure document management in your office.



Mobile printing

The DP-MB251CX is compatible with the Mobile Print application* and Google Cloud Print™, enabling printing from mobile devices such as tablets and smartphones and giving your business the edge in today's fast-moving world.

* For more details, please visit "<http://panasonic.net/pcc/products/aiio/app/>".



Internet Fax

The Internet Fax function dramatically increases fax transmission speed. Panasonic Internet Fax capability far exceeds any Super G3 transmission and with Internet Fax, large jobs can be quickly transmitted over the Internet.

LDAP (Lightweight Directory Access Protocol)

The DP-MB251CX supports LDAP which makes it possible for you to use your phonebook on the network. This means you don't have to separately register or manage email addresses or phone numbers on your device; instead you can consolidate the phonebook management on the network.