

# Panasonic

DECT數碼室內無線電話  
DECT Cordless Phone

## KX-TG6811HK KX-TG6812HK



\*Resource: MZA Ltd., 2012 Sales Figure from 2013 Market Share Analysis - Consumer Cordless  
<http://panasonic.net/pcc/products/tel/>



## Simply Elegant 簡約美學



中英文目錄顯示  
Chinese & English Menu Display



NR降噪功能  
Noise Reduction



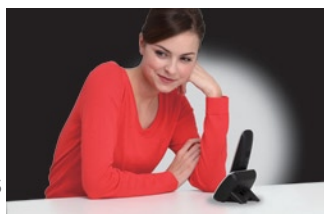
背光燈顯示屏  
Easy to See Backlight LCD



纖巧機身  
Thin and Compact Base Unit

## 後備供電 Power Back-Up Operation

停電時已充電的子機可暫時供電至放於其下的主機，作緊急通話最多3小時\*4\*5  
當停電時正進行外線通話，主機內的電容裝置可暫時供電，讓您繼續通話約1分鐘\*5



During power failure, a charged handset can temporarily supply power for 3 hours max.\*4\*5 to the base unit it placed

When power failure occurs during an outside call, you can continue to talk for about 1 minute with capacitor circuit inside base unit

## 拒接指定來電\*1 Incoming Call Barring\*1

設定不想接聽的來電號碼，杜絕騷擾

Stop unwanted junk calls from registered numbers



## 產品系列 Lineup

KX-TG6811HK

KX-TG6812HK  
雙子機 Twin Set黑  
Black珍珠銀  
Pearl Silver

## 可配子機 Optional Handset

每部主機可配6部子機

You can use up to six handsets by adding optional handsets.



KX-TGA681HK

\*1 需配合網絡供應商提供之服務。

\*2 需預先登記電話簿以顯示姓名。

\*3 KX-TG6811HK需附加子機。

\*4 連續使用處於後備電源模式的子機：最多2小時；

連續使用並非處於後備電源模式的子機 / 處於後備電源模式的備用狀態：最多3小時

\*5 操作時間視乎使用條件與環境溫度而定

\*1 Requires subscription to Caller ID service offered by your telephone company.

\*2 Requires registration in the phonebook to display the name.

\*3 Optional handset is required for KX-TG6811HK.

\*4 Continuous use of the handset in power back-up mode: 2 hours max.

Continuous use of the handset other than a handset in power back-up mode / Not in use in power back-up mode: 3 hours max.

\*5 Actual battery performance depends on usage and ambient environment.

• 產品圖片與實物可能略有不同。  
• 所有螢幕顯示及LED燈圖片為電腦模擬，僅供參考。  
• 重量及尺寸為約數。

• 產品設計及規格如有更改，恕不另行通知。  
• 上述產品可能受出口條例規管。

• The actual product may vary slightly from photograph.

• All pictures of LCD display and LED lamp are simulated.

• Weights and dimensions are approximate.

• Design and specifications are subject to change without notice.

• These products may be subject to export control regulations.

## NR降噪功能 Noise Reduction

智能追蹤並消滅電話另一端的背景雜音

Reduce the background noise of the other party



## 夜間模式 Night Mode

於指定時間內來電靜音或延遲響鈴，休息時間不受打擾

Each handset can be programmed to prevent ringing during specific periods



## 規格 Specifications

雙向頻率 Frequency Bands	1.88 - 1.90 GHz
專用頻道數量 Specific Channel Numbers	120
電話街線 Number of Phone Lines	1
每部主機可配子機 Multiple Handsets Capability	6
顯示語言 LCD Language	中 / 英 Chinese / English
背光燈顯示屏 Backlit LCD	1.8吋 1.8"
螢光鍵盤 Lighted Keypad	✓
來電顯示記憶*1 Caller ID Memory	50
拒接指定來電 Incoming Call Barring	50
鈴聲選擇 Ring Tone (Melodies / Tones)	30 / 10
子機電話簿記憶 Handset Phonebook Memory	100
快速撥號 Speed Dial	撥號鍵「1」至「6」 Dial Key "1" to "6"
無線子機免提對講音量 Handset Speakerphone Volume Steps	6級 6-step
重撥記憶 (姓名*2及號碼) Redial Memory (Name*2 & Number)	10
智慧功能鍵 Smart Function Key	✓ (NR鍵 NR Key)
聲音均衡器 Customized Sound System (Equalizer)	高音頻 / 低音頻 Treble / Bass
通話共享*3 Call Share*3	✓
備忘鬧鐘 Memo Alarm	一次 / 每日 / 每星期；重響 Once / Daily / Weekly; Snooze
通話時間 / 備用時間 Talk Time / Standby Time	最多15小時 / 最多170小時 Up to 15 hours / Up to 170 hours
ECO省電模式 One Touch Eco Mode	✓
備用模式耗電量 Standby Power Consumption	0.6 W
尺寸 Dimensions	主機 Base Unit 107 x 86 x 77 (毫米 mm)
(闊 x 深 x 高) (W x D x H)	無線子機 Handset 48 x 29 x 164 (毫米 mm)
充電器 Charger	70 x 70 x 39 (毫米 mm)
重量 Weight	主機 Base Unit 98 (克 g)
	無線子機 Handset 129 (克 g)
	充電器 Charger 39 (克 g)

### 重要事項

- 安全措施：使用本產品前，請先小心閱讀使用說明書及安裝指引

### Important

- Safety Precaution: carefully read the operating instructions and installation manual before using this product.