

# Panasonic

Document Scanner  
**KV-S1065C**  
**KV-S1046C**



## A Compact Body Packed with Advanced Functions



- 60 ppm / 120 ipm\* (KV-S1065C)
- 45 ppm / 90 ipm\* (KV-S1046C) \* A4, Portrait, 200 dpi, Binary / Colour
- Reliable paper feed mechanism
- Double-Feed Skip function
- Advanced image processing
- Mixed paper and hard card batch scanning
- Image Capture Plus technology ensures Automatic Image Orientation

# A Compact Body Packed with Advanced Functions

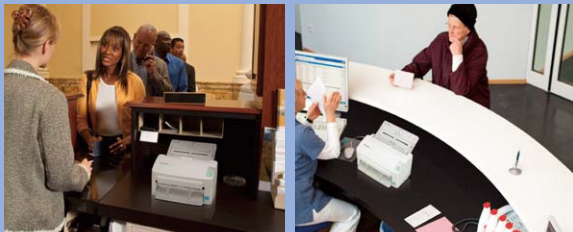
Even with its compact body, the KV-S1065C / KV-S1046C has a fast scanning speed of 60 ppm\* (for the KV-S1065C) or 45 ppm\* (for the KV-S1046C). And it's capable of scanning a variety of documents, including long, small, thick and thin sheets. Normally complicated settings have been automated, and images that require re-scanning are automatically detected by hardware process to provide both easy use and fast scanning. This advanced document scanner will greatly boost the efficiency of your office.

\*A4, Portrait, 200 dpi.



## Reception

The KV-S1065C / KV-S1046C's small footprint allows it to conveniently fit into small spaces, such as reception counters. Placing it at the reception area of a bank or hospital allows customer or patient ID cards and other documents to be quickly scanned. This enables real-time information sharing to help provide fast, accurate service.



## Office

The KV-S1065C / KV-S1046C can quickly convert a large number of documents into electronic data, so it provides smooth usage even in offices with many users. Scanning documents into data makes it possible to consolidate information, which improves work efficiency. And it lowers the cost of handling documents and reduces the space needed to store them.



## Power Saving

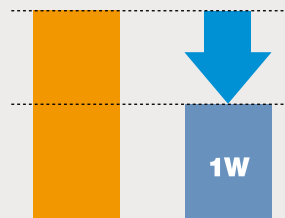
### LED lighting

The scanning section uses LEDs for its light source to lower power consumption while scanning.



### Sleep mode

Power consumption is suppressed to 1 watt maximum during sleep mode to save energy while the scanner is not being used.



### Power Auto Off function

The power automatically turns off at a preset time to cut down on wasted electricity.\*

\* Approximately 0.3 W of electricity is consumed when the power is off.



## Easy Maintenance

The clamshell design allows full, easy access to the entire paper path, so you can clear paper jams, clean the unit, or replace a roller easily without having to call a service technician.

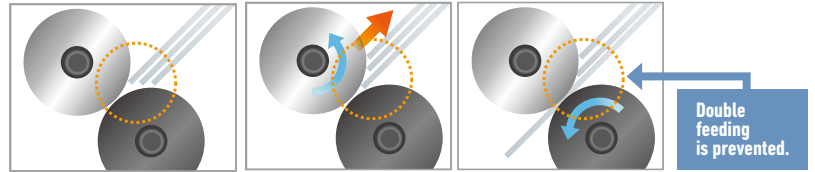


# Reliable Paper Feed Mechanism

## Accurate processing of documents with various thicknesses

The paper feed rollers rotate independently left and right to reduce document skewing during scanning. In addition, the Active Double-Feed Prevention Roller reverses rotation the instant that the leading document leaves the paper feed section to prevent the double-feeding of documents that are stuck together. These functions enable documents with thicknesses from 20 to 209 g/m<sup>2</sup> (5.4 to 55 lbs.\*) to be accurately transported at high scanning speeds of 60 ppm.\*\*

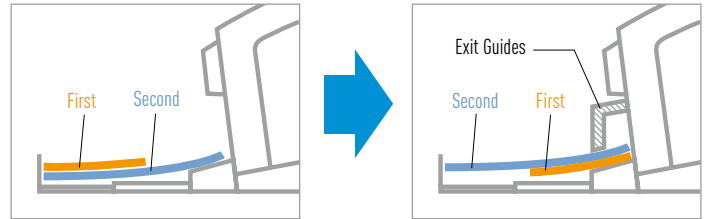
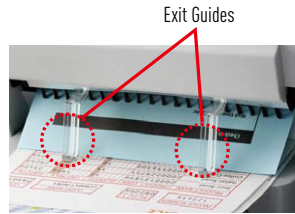
Active Double-Feed Prevention Roller



\* Weight of 500 sheets (432 x 559 mm / 17 x 22 in.).  
\*\* For the KV-S1065C only. A4, Portrait, 200 dpi.

## Document output control

The output speed is automatically lowered for documents that are 148 mm or shorter, and the exit guides keep the document from slipping. This stops longer documents from sliding under shorter ones to prevent the output order from changing.



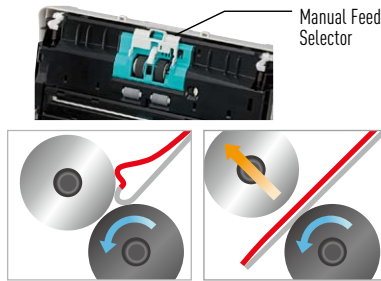
The document direction is face down.

# Scanning of Various Documents

## Compound paper scanning

A Double-Feed Prevention Roller release mechanism is provided. By lifting the manual feed selector, compound paper such as carbonless copy paper can also be fed.\*

\* When the Double-Feed Prevention Roller is released by the Manual Feed Selector, the Double-Feed Detection function must be cancelled by a software setting. When scanning a document manually, feed the document one set at a time.



Compound paper being fed without releasing the Double-Feed Prevention Roller.

Compound paper being fed by releasing the Double-Feed Prevention Roller.

## Mixed paper and hard card batch scanning

These scanners were designed to be able to combine paper documents along with a hard ID card, such as a driver's license, in a single batch by using the mixed card batch guide. You can even scan embossed cards smoothly.



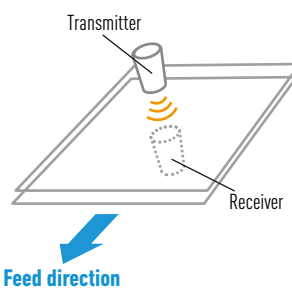
# Double-Feed Skip Function

## Easy double-feed skipping

Double-feeding is detected by a highly reliable, ultrasonic sensor to prevent feeding problems. When scanning stops due to documents that include things like envelopes or that have sticky notes attached, simply press the Skip key to cancel the error and resume scanning.



< Ultrasonic Sensor >



Documents for which scanning shouldn't be stopped even when double-feeding is detected



Envelopes

Documents with sticky notes attached

# Advanced Image Processing

## Improved scanning quality

The Automatic Brightness Adjustment function automatically adjusts the brightness and contrast of scanned images, even on documents with varying paper colours and text hues, to produce scanned images with suitable brightness. The Automatic Image Emphasis function emphasizes the edges of characters and lines to sharpen them and softens the appearance of other parts of the image. Noise (black spots) is also reduced.

Automatic Brightness Adjustment



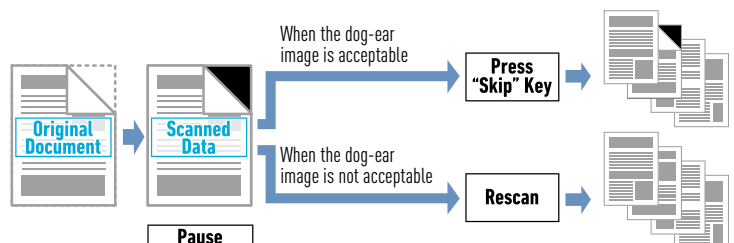
Original Document

Scanned Data\*

\* Combined with Background Removal.

## Missing image detection and prevention

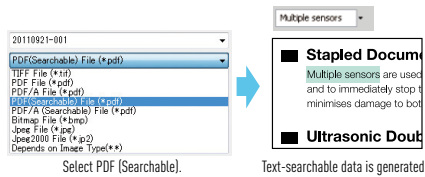
When a scanned image is missing due to an inadvertently folded corner (dog-ear) or a document that is extremely skewed, the Dog-Ear Detection function automatically and temporarily stops the scanning. The user can then decide to rescan, or to continue scanning as is.



# A Wealth of Image Processing Functions from Image Capture Plus Software

## Easy-to-use data formats

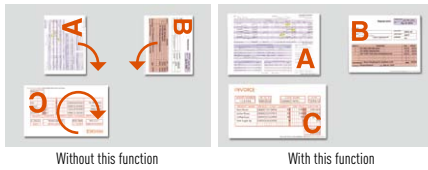
Images can be saved in various data formats, such as PDF, JPEG, TIFF and Bitmap. Scanned data can be moved and saved in a selected folder all at once. Plus, text-searchable PDF and searchable PDF/A data can be generated.



## Automatic Image Orientation

Even when documents are set in different directions, this function detects the direction of the scanned text in documents and automatically rotates it into the correct direction.\*

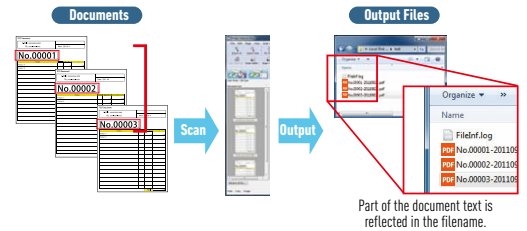
\* The orientation of documents with many characters using text decorations, such as outlining, drop shadows, underlines, etc., may not be correct.



## OCR Zone function

When you use the OCR Zone function, text will be recognized while scanning and acquired as an OCR result that is used in the file name and Output Log.\*

\* The Output Log is available only in Job Scan mode.



## KV-S1065C / KV-S1046C Specifications

Scanning Face	Duplex	
Scanning Method	Colour CIS (600 dpi) Background: Black	
Resolution	100 - 600 dpi (1 dpi step) Optical: 300 dpi / 600 dpi (Automatic switch)	
Scanning Speed*1	Binary / Colour A4 size 200 dpi	Simplex KV-S1065C: Up to 60 ppm / KV-S1046C: Up to 45 ppm Duplex KV-S1065C: Up to 120 ipm / KV-S1046C: Up to 90 ipm
Automatic Detection	Ultrasonic double-feed detection (1 position), Dog-ear detection	
Compression	JPEG (Colour, grayscale)	
Tonal Gradation	Binary, Grayscale, Colour, MultiStream: Binary & Grayscale, Binary & Colour	
Binary Mode Halftone	Dither, Error diffusion	
Image Control	Automatic Brightness Adjustment, Automatic Image Emphasis, Multi Colour Drop Out, Dynamic Threshold, White Level From Paper, Image Emphasis, Gamma Correction, Automatic Separation, Noise Reduction, Mirror Image, Monochrome Reversing and much more.	
Other Functions	Length Control, Patchcode Detection (Type 2, 3, T), Control Sheet, Long Paper Mode, Double Feed Skip, Dog-ear Skip	
Documents	Paper	Size 48 x 70 mm (1.9 x 2.8 in.) - 216 x 2540 mm (8.5 x 100 in.) Thickness 0.04 - 0.2 mm (1.6 - 7.9 mils Note: 1 mil = 0.001 in.) Weight*2 20 - 209 g/m <sup>2</sup> (5.4 - 55 lbs.)
	Card	Size 85.6 x 54 mm (3.4 x 2.1 in.) (ISO 7810 ID-1) Thickness 0.76 mm (0.03 in.)
Feed tray Capacity	Up to 75 sheets (80 g/m <sup>2</sup> , 20 lbs.), 3 hard cards (ISO 7810 ID-1)	
Supported Operating System	Windows® XP SP3 or later(32-bit), Windows Vista® SP2 or later(32 / 64-bit), Windows® 7(32 / 64-bit)	
Interface	USB 2.0	
External Dimensions (W x D x H)	317 x 209 x 196 mm (12.5 x 8.2 x 7.7 in.) (When the exit tray is closed and without the feed tray)	
Weight	4.0 kg (8.8 lbs.)	
Power Requirement	External power supply (AC adaptor) AC 100 - 240 V, 50 / 60 Hz	
Power Consumption	Maximum (Scanning)	25 W
	Minimum (Standby)	8 W
	Sleep mode	1.0 W or less
	When the power key is OFF	0.3 W or less (While the AC adaptor is connected to the AC outlet)
Operating Environment	Temperature	15 - 30 °C (59 - 86 °F)
	Humidity	20 - 80 % RH
Storage Environment	Temperature	0 - 40 °C (32 - 104 °F)
	Humidity	10 - 80 % RH
Accessories	CD-ROM: Device driver software, ISIS® driver software, TWAIN driver software, Image Capture Plus application software*3, User Utility software, Installation manual, Operation manual, Control sheet Installation Manual, Feed Tray, Mixed batch card guide (Pre-installed), AC adaptor & Power cord, USB cable	
Consumables	Roller exchange kit	KV-SS058 (Double feed prevention roller x 1, Paper feed roller x 1)
Options	Roller cleaning paper	KV-SS03
	Flatbed Scanner*4	KV-SS081/KV-SS080*5

### Trademarks and registered trademarks

- ENERGY STAR and the ENERGY STAR mark are registered U.S. marks.
- ABBYY and FineReader are registered trade marks of ABBYY Software House.
- ISIS is a registered trademark or trademark of EMC Corporation in the United States and other countries.
- Microsoft, Windows and Windows Vista are either registered trademarks or trademarks of Microsoft Corporation in the United States and/or other countries.
- All other brand or product names are the property of their respective holders.

## Dimensions

KV-S1065C / KV-S1046C



As an ENERGY STAR® Partner, Panasonic has determined that this product meets the ENERGY STAR guidelines for energy efficiency. International ENERGY STAR Program is applicable only for the United States, Canada, and EU.



- \*1: The scanning speed differs depending on the host computer, the operating system, the application, the measuring method, the quantity of data in the image, and the paper type. The scanning speed is as determined by Panasonic methods of speed measurement.
- \*2: "Weight in pounds" of paper represents the weight of 500 sheets (432 x 559 mm / 17 x 22 in.).
- \*3: The supported file types are PDF, PDF/A, Searchable PDF, Searchable PDF/A, JPEG, JPEG2000, TIFF and Bitmap. Searchable PDF and Searchable PDF/A documents can be created for English, French, German, Italian, Spanish, Brazilian Portuguese, Japanese, Korean, Simplified Chinese, and Traditional Chinese. Searchable PDF and Searchable PDF/A documents for Japanese, Korean, Simplified Chinese, and Traditional Chinese can be created when using Operating Systems of the respective languages.
- \*4: Requires the KV-S1065C/KV-S1046C
- \*5: KV-SS081/KV-SS080 is not available for certain countries. Please contact our dealer and confirm the availability.

### Important

- Safety Precaution: carefully read the operating instructions and installation manual before using this product.

- Dimensions and weights are approximate.
- Design and specifications are subject to change without notice.
- These products may be subject to export control regulations.

These products are designed to reduce hazardous chemical substances.

DISTRIBUTED BY :

# Panasonic

Document Scanner: <http://panasonic.net/pcc/products/scanner>