

## Quick Guide

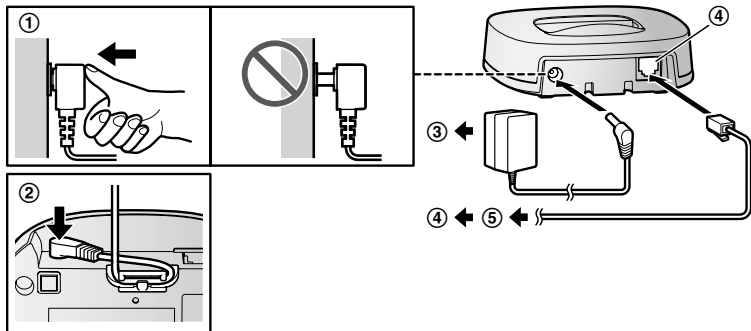
### Connections

#### Base unit

- 1 Connect the AC adaptor to the unit by pressing the plug firmly.
- 2 Fasten the cord by hooking it.
- 3 Connect the AC adaptor to the power outlet.
- 4 Connect the telephone line cord to the unit, then to the telephone line jack until you hear a click.
- 5 A DSL/ADSL filter (not supplied) is required if you have a DSL/ADSL service.

#### Note:

- L Use only the supplied Panasonic AC adaptor PNLV226E.
- L Use only the supplied telephone line cord.



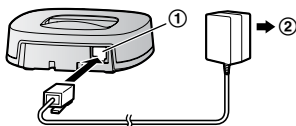
## Connections

### Charger

- 1 Connect the AC adaptor plug to the unit until you hear a click.
- 2 Connect the AC adaptor to the power outlet.

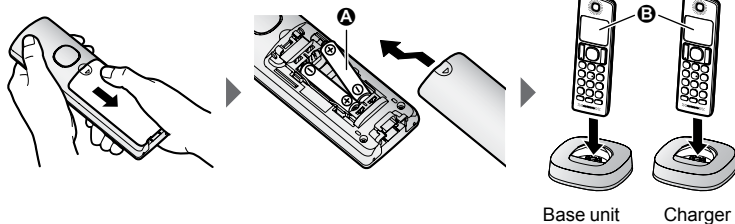
#### Note:

- L Use only the supplied Panasonic AC adaptor PNLV233E.



## Battery installation/Battery charging

Charge for about 7 hours.



#### Note:

- L USE ONLY rechargeable Ni-MH batteries AAA (R03) size (A).
- L Do NOT use alkaline/manganese/Ni-Cd batteries.
- L Follow the directions on the display to set up the unit.
- L Confirm "Charging" (Charging) is displayed (B).

## Operating tips

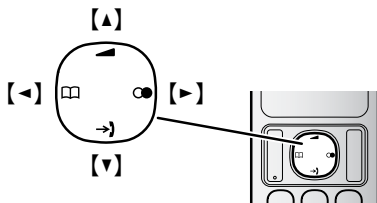
### Soft keys

By pressing a soft key, you can select the feature shown directly above it on the display.



### Navigator key

Symbol	Meaning
{v}	{^} Up
{y}	{V} Down
{k}	{<} Left
{R}	{>} Right



- {^}, {V}, {<}, or {>}: Scroll through various lists and items.
- {^} or {V} (v): Adjust the receiver or speaker volume while talking.
- {y} (Caller list): View the caller list.
- {k} (Phonebook): View the phonebook entry.
- {R} (Redial): View the redial list.

## Display language (Handset) (default: "English" (English))

- 1 {B}(11)
- 2 {r}: Select your desired language. s {OK} s {m}

## Date and time (Handset)

- 1 {B}(1)1
- 2 Enter the current date, month, and year. s {OK}
- 3 Enter the current hour and minute.
- 4 {OK} s {m}

## Dialling mode (Handset) (default: "Tone" (Tone))

- 1 {B}(12)
- 2 {r}: Select the desired setting. s {OK} s {m}

Phonebook (Handset)	
Adding entries	<p><b>1</b> {k} s {B}</p> <p><b>2</b> {r}: “<b>New Entry</b>” (New entry) s {OK}</p> <p><b>3</b> Enter the party’s name. s {OK}</p> <ul style="list-style-type: none"> <li>• You can change the character entry mode by pressing {R/ECO}.</li> <li>• To enter a name, see the character table in the operating instructions.</li> </ul> <p><b>4</b> Enter the party’s phone number. s {OK} 2 times s {m}</p>
Making calls	<p><b>1</b> {k}</p> <p><b>2</b> {r}: Select the desired entry.</p> <p><b>3</b> {C}</p>
Basic operations	
Making/Answering calls (Handset)	
Making calls	Dial the phone number. s {C}/{s}
Answering calls	{C}/{s}
To hang up	{m}
To adjust the receiver/ speaker volume	Press {^} or {V} repeatedly while talking.
Making a call using the redial list	{R} s {r}: Select the desired phone number. s {C}
Temporary tone dialling (for rotary/pulse service users)	Press * before entering access numbers which require tone dialling.
Handset ringer volume	Press {^} or {V} repeatedly to select the desired volume while ringing.

## Frequently asked questions

Question	Cause/solution
Why is _ displayed?	<ul style="list-style-type: none"> <li>L The handset is too far from the base unit. Move closer.</li> <li>L The base unit's AC adaptor is not properly connected. Reconnect AC adaptor to the base unit.</li> <li>L The handset is not registered to the base unit. Register it (page 6).</li> </ul>
Why can I not make calls?	<ul style="list-style-type: none"> <li>L The dialling mode may be set incorrectly. Change the setting (page 3).</li> </ul>
What should I do when the handset does not turn on?	<ul style="list-style-type: none"> <li>L Make sure the batteries are installed correctly.</li> <li>L Fully charge the batteries.</li> <li>L Clean the charge contacts and charge again.</li> </ul>
How long is the battery operating time?	<ul style="list-style-type: none"> <li>L When you are using fully-charged Ni-MH batteries (supplied batteries); In continuous use: 16 hours max. Not in use (standby): 200 hours max.</li> <li>L Actual battery performance depends on usage and ambient environment.</li> </ul>
When should I replace the batteries?	<ul style="list-style-type: none"> <li>L If the batteries are fully charged until &amp; is displayed, but ) is displayed after a few calls, replace the batteries with new ones.</li> </ul>
What is a PIN?	<ul style="list-style-type: none"> <li>L The PIN is a 4-digit number that must be entered in order to change certain base unit settings. The default PIN is "0000".</li> </ul>
What should I do to display caller information?	<ul style="list-style-type: none"> <li>L You must subscribe to a Caller ID service. Contact your service provider/telephone company for details.</li> <li>L The message "<b>You must first subscribe to Caller ID.</b>" (You must first subscribe to Caller ID.) will be displayed until you receive caller information after subscribing to a Caller ID service.</li> </ul>
What should I do when noise is heard, sound cuts in and out?	<ul style="list-style-type: none"> <li>L You are using the handset or base unit in an area with high electrical interference. Re-position the base unit and use the handset away from sources of interference.</li> <li>L Move closer to the base unit.</li> <li>L If you use a DSL/ADSL service, we recommend connecting a DSL/ADSL filter between the base unit and the telephone line jack. Contact your DSL/ADSL provider for details.</li> </ul>

## Registering a handset to the base unit

The supplied handset and base unit are pre-registered. If for some reason the handset is not registered to the base unit, re-register the handset.

**1 Handset:**

{B}{13}

**2 Base unit:**

Press and hold {x} for about 5 seconds.

**3 Handset:**

{OK} s Wait until “**Base PIN**” (Base PIN) is displayed. s Enter the base unit PIN (default: “0000”). s {OK}

## Optional service (Caller ID)

If you subscribe to a Caller ID service,



caller information will be displayed when a call is received, or when viewing missed calls.